



2025

SUMMER CAMP GUIDE



Active Member Registration:
December 2, 2024

New Member Registration:
January 2, 2025

Non-Member Registration:
February 3, 2025

Standard Rate Begins:
March 2, 2025

Camp Runs:
June 9th - Aug 15th



NORTH SUBURBAN YMCA
2705 Techny Rd. Northbrook, IL 60062
847-272-7250 nsymca.org

The NSYMCA is a 501(c)3 non-profit organization, open and accessible to all.

WHAT'S NEW FOR 2025?

Active Member Registration:

Monday, December 2, 2024, at 10:00am

New Member Registration:

Thursday, January 2, 2025, at 10:00am

Non-Member Registration:

Monday, February 3, 2025, at 10:00am

Active Members are those who have had an active NSYMCA membership prior to October 1, 2024. **Online registrations that do not meet this requirement will be deleted.**

WAYS TO REGISTER

Create Your NSYMCA Account Today!

As a reminder, we updated our NSYMCA website and operating system this summer, which requires all members to create a new login account. **Please ensure your account is set up before registering for camp.** Create your account today at: nSYMCA.org.

Online Registration

For the first time ever, you can register for camp online at nSYMCA.org! Registration will begin at 10:00 AM on the opening dates listed above. Please double-check your registration details, as we will not be able to make corrections for sold-out camps.

In-Person Registration

You may also register by submitting a completed camp registration form to our front desk or by emailing it to registrar@nSYMCA.org. Please note that hard-copy registrations will be processed in the order they are received. These are processed manually and can take 3-4 business days, while online registration continues in real-time.

All registrations must be completely filled out in order to be processed. Missing information will delay your registration and spots are not held.

Deposit and Registration Fee

All registrants will be charged a weekly deposit/registration fee as follows:

- \$10 per week for half-day camp
- \$20 per week for full-day camp

The maximum deposit/registration fee for full-day camps is \$200, which covers the full 10-week session.

After paying the deposit, you can make additional payments toward your total camp balance at the time of registration. For example, if your total balance is \$1000 after paying the registration fee, you may choose to pay \$500 upfront, leaving the remaining balance of \$500 to be paid off over the course of the payment plan. If you would like to make additional payments after registration, please contact registrar@nSYMCA.org to confirm.

All camp deposits are non-refundable.



Dear NSYMCA Families,

We are excited to present the 2025 Summer Camp Guide! Returning families, we cannot wait to see you again this summer. New families, we are so excited to welcome you into the NSYMCA family! Our mission, vision,

and values are not just words on paper; we are a Y and a camp that is truly for ALL.

Please note our new policy and registration changes for 2025. These changes were made to provide an improved user experience and provide a greater advantage to our NSYMCA member families and participants.

This summer, we are offering our largest collection of camp options and experiences EVER! If you need help deciding, I have spotlighted my "Top Picks!" throughout the guide for camps I am MOST excited to offer this summer!



Ricky Gonzalez
Sr. Director of Camp &
Youth Programming

Child Care Tax Statements

Your child(ren's) Child Care Tax statements are now available online. They will be developed each January for the previous year and will remain available for the entire year online (in your account) at nSYMCA.org.

Scholarship

All scholarship information **MUST** be updated and approved in order to receive financial aid for camp registrations online. We can **NOT** retroactively apply scholarship after camp registrations have been processed. Please note that scholarship does not apply to all camps (See page 5)

Membership

Your child must have a membership in order to receive membership savings for camp. If you are interested in a NSYMCA membership for your child, your membership must be processed prior to registering for camp. We can **NOT** retroactively apply membership savings after camp registrations have been processed.

Memberships must be maintained for a minimum of 6 months and through your child(ren's) final day of camp registered. Membership cancellations can only be processed by our front desk reception staff. If you cancel your membership prior to the 6-month minimum and your child(ren's) final day of camp registered, you will be subject to pay the non-member rate (minus fees paid to date). You can now register for membership online.

PAYMENT HISTORY

View and access your payment history online.

1. Navigate to the unit the child is listed on
2. Select the child whose payment history you wish to view
3. Select Child Care tab under the member's profile
4. Click Child Care button
5. Under Quick Links section, click Payment History
6. Enter payment date range
7. Select View to see data on the screen or Export to obtain a PDF document

You can now view your child's camp schedule online in the calendar view on their dashboard.

NSYMCA CAMP AT A GLANCE!

Changes and Transfers

All camp cancellations and transfer requests must be submitted in writing to registrar@nsymca.org. A \$30 per camp week (per child) transfer fee will be required for any transfers, and this applies to all requests.

Refunds

Camp cancellations are subject to a \$30 per camp week (per child) cancellation fee. This differs from previous years, where a flat \$30 cancellation fee was applied. For example, if you cancel three weeks of camp, your cancellation fee will total \$90. The refund deadline is **May 1, 2025**. After this date, no refunds or credits will be issued for cancellations.

If you have to cancel camp, your deposit for that week will be applied to the cancellation fee. If you paid a \$20 deposit, then you will be charged an additional \$10.

Traditional Vs Specialty

Full Day registered Traditional Campers attend full day field trips each Thursday. If you are a half day Traditional day camper, you do not attend the Thursday field trips. If you are in a specialty camp, you do not attend the Thursday field trip.

Free swim is M, W, F in the afternoons for Traditional Camp only. If you are registered for 'AM only' or register for a PM Specialty Camp, your child will not swim.

Swim Lessons are on Tuesdays. They are an optional add on. They are available for Traditional Camp only. If you are registered for a Specialty Camp only, you can not register for swim lessons that given week. If you are registered for half day Traditional, you may register for swim lessons.

Payment Plans

We are offering both Credit Card and ACH payment options for camp registration. Please note:

- A 3% processing fee will apply to all credit card payments.
- A 0.96% processing fee will apply to ACH payments.
- A \$30 NSF fee will be charged for any payment that is returned by the bank. As a courtesy, one fee will be waived per calendar year.

Payment plans are available to both members and non-members. There are two payment plan options (see below).

Option #1 – Standard Payment Plan

- Payments will begin the week before your child's camp starts. For example, if your child's camp begins in Week 2, your first payment will be charged on the Monday prior.
- Payments will be automatically drafted 7 days before the start of each week of camp.
- If you are registered for all 10 weeks, the payment plan will span 10 weeks, with the first draft occurring on June 2, 2025, and the final draft on August 4, 2025.
- Payment amounts may vary week-to-week based on the specific camps your child is registered for. For example, if your child is in a Premium Specialty Camp for Week 1 and Traditional Camp for Week 2, Week 1 will have a higher payment due to the price difference.

Option #2 – Custom Payment Plan

- To set up a custom payment plan, please email registrar@nsymca.org after completing your camp registration and paying the required deposits.
- Custom payment plans can begin at any time after registration and may be adjusted prior to each payment draft.
- All custom payment plans must be completed by your child's final registered day of camp.

Important Dates

DEC. 2ND

*Active Member Registration Opens

JAN. 2ND

New Member Registration Opens

FEB. 3RD

Non-member Registration Opens

MARCH 1ST

HAWKS Inclusion 1-on-1 Camp Registration Closes

MARCH 2ND

Standard Rate Begins

MAY 1ST

Deadline for Cancellation Refunds

JUNE 5TH

Meet & Greet

JUNE 7TH

Preschool Camp Meet & Greet

JUNE 9TH

Camp Week 1 begins

JULY 4TH

No Camp. Proration has been applied.

AUG 15TH

Last Day of Camp

*Active Members as of 10/1/24

NSYMCA CAMP AT A GLANCE!

Week 1 6/9-6/13	Week 2 6/16-6/20	Week 3 6/23-6/27	Week 4 6/30-7/4 *No Camp 7/4	Week 5 7/7-7/11	Week 6 7/14-7/18	Week 7 7/21-7/25	Week 8 7/28-8/1	Week 9 8/4-8/8	Week 10 8/11-8/15
--------------------	---------------------	---------------------	------------------------------------	--------------------	---------------------	---------------------	--------------------	-------------------	----------------------

Camp	Grade/Age											Days	Time	Before 3/2	After 3/2	\$NM	
		1	2	3	4	5	6	7	8	9	10			\$YM	\$YM		
PRESCHOOL DAY CAMPS																	
Little Pioneers*	3 yrs	•	•	•	•	•	•	•	•	•	•	M-F	9am-12pm	\$170	\$185	\$237	
Pathfinders AM*	4 yrs	•	•	•	•	•	•	•	•	•	•		9am-12pm	\$186	\$201	\$279	
Pathfinders full-day*	4 yrs	•	•	•	•	•	•	•	•	•	•		9am-4pm	\$264	\$280	\$389	
TRADITIONAL DAY CAMPS																	
Earth Trekkers full-day	5 yrs	•	•	•	•	•	•	•	•	•	•	M-F	9am-4pm	\$254	\$269	\$379	
Earth Trekkers AM		•	•	•	•	•	•	•	•	•	•		9am-12pm	\$176	\$191	\$254	
Earth Trekkers PM		•	•	•	•	•	•	•	•	•	•		1-4pm	\$254	\$269	\$379	
Voyagers full-day	1st	•	•	•	•	•	•	•	•	•	•	M-F	9am-4pm	\$254	\$269	\$379	
Voyagers AM		•	•	•	•	•	•	•	•	•	•		9am-12pm	\$176	\$191	\$254	
Voyagers PM		•	•	•	•	•	•	•	•	•	•		1-4pm	\$254	\$269	\$379	
Trailblazers full-day	2nd-3rd	•	•	•	•	•	•	•	•	•	•	M-F	9am-4pm	\$254	\$269	\$379	
Trailblazers AM		•	•	•	•	•	•	•	•	•	•		9am-12pm	\$176	\$191	\$254	
Trailblazers PM		•	•	•	•	•	•	•	•	•	•		1-4pm	\$254	\$269	\$379	
Adventurers full-day	4th-5th	•	•	•	•	•	•	•	•	•	•	M-F	9am-4pm	\$254	\$269	\$379	
Adventurers AM		•	•	•	•	•	•	•	•	•	•		9am-12pm	\$176	\$191	\$254	
Adventurers PM		•	•	•	•	•	•	•	•	•	•		1-4pm	\$286	\$302	\$416	
Navigators full-day	6th-8th	•	•	•	•	•	•	•	•	•	•	F	9am-4pm	\$52	\$52	\$62	
Navigator Lock-In**		•	•	•	•	•	•	•	•	•	•						
CIT Program (Apply Online)	8th-9th			•								M-F		\$546		N/A	
SPORTS DAY CAMPS																	
Sports Camp full-day	1st-6th	•	•	•	•	•	•	•	•	•	•	M-F	9am-4pm	\$254	\$269	\$379	
Sports Camp AM		•	•	•	•	•	•	•	•	•	•	M-F	9am-12pm	\$176	\$191	\$254	
Sports Camp PM		•	•	•	•	•	•	•	•	•	•	M-F	1-4pm	\$257	\$272	\$330	
Beginning Dance	3rd-6th											M-F	1-4pm	\$260	\$289	\$346	
Intermediate Dance	4th-8th		•	•								M-F	1-4pm	\$223	\$238	\$295	
Cheer	2nd-6th											M-F	1-4pm	\$187	\$204	\$266	
Gymnastics Camp	1st-6th	•	•	•	•	•	•	•	•	•	•	M-F	9am-12pm	\$200	\$216	\$278	
Pre-Team/Team Gymnastics		•	•	•	•	•	•	•	•	•	•		M-F	9am-12pm			
*PRORATION AVAILABLE. **MUST BE REGISTERED FOR THAT WEEK OF CAMP.																	



FINANCIAL ASSISTANCE AVAILABLE

Financial assistance is first-come, first-served and new applications are required regardless of prior scholarship status. Payment plans are available. For more detailed information please see the Parent Guide online.

For scholarship information contact Heidi Busch, Membership Director at hbusch@nsymca.org.

PAYMENT PLANS AVAILABLE FOR MEMBERS & NON-MEMBERS.

NSYMCA CAMP AT A GLANCE!

Week 1 6/9-6/13	Week 2 6/16-6/20	Week 3 6/23-6/27	Week 4 6/30-7/4 *No Camp 7/4	Week 5 7/7-7/11	Week 6 7/14-7/18	Week 7 7/21-7/25	Week 8 7/28-8/1	Week 9 8/4-8/8	Week 10 8/11-8/15	Before 3/2	After 3/2						
Camp	Grade/ Age	1	2	3	4	5	6	7	8	9	10	Days	Time	\$YM	\$YM	\$NM	
SPECIALTY CAMPS																	
Art Explorers	K-4th	PM	PM	PM	PM	PM	PM	PM	PM	PM		M-F	1pm-4pm	\$248	\$263	\$372	
Builders & Destroyers	1st-6th										PM		1pm-4pm	\$227	\$242	\$352	
Craft-tastic! - NEW!				PM		AM	AM			PM				9-12pm/1-4pm	\$248	\$263	\$372
Getting Messy	1st-6th		AM							PM				9-12pm/1-4pm	\$227	\$242	\$352
Go Wild - NEW!					AM									9am-12pm			
Jewelry & Beads		PM								AM				9-12pm/1-4pm			
Mad Scientist	1st-6th				PM									1pm-4pm			
Whodunnit?											AM			9am-12pm			
PREMIUM SPECIALTY																	
Battle Robots**	1st-6th						AM					M-F	9am-12pm	\$289	\$305	\$411	
CSI - Crime Scene Investigation** - NEW!	2nd-5th	AM											9am-12pm				
Culinary**	1st-6th		PM	PM			PM	PM			PM		PM				1pm-4pm
Engineer Race Cars** - NEW!	1st-6th												AM	9am-12pm			
Fishing Camp** - NEW!	2nd-6th			AM										9am-12pm	\$300	\$316	\$422
Little Veterinarians: Dog**	2nd-4th								AM					9am-12pm			
Sew Much Fun**	2nd-6th					PM		AM						9-12pm/1-4pm	\$300	\$316	\$422
Outer Space & Physics** - NEW!	1st-6th	PM												1pm-4pm	\$289	\$305	\$411
Video Game Party Truck**	1st-6th		AM			AM								9am-12pm			
FIELD TRIP CAMPS																	
Best Week Ever!** - NEW!	4th-8th										FD	M-F	9-4pm	\$353	\$369	\$483	
Chicago Trotters**	4th-8th					FD											
Outdoor World** - NEW!	3rd-8th										FD						
Thrill Seekers** - NEW!	4th-8th				FD												
Ultimate Destination**	3rd-8th			FD													
Water Park**	4th-8th						FD										
Wisconsin Trotters** - NEW!	4th-8th								FD								
Y On The Fly** (Full Day)	3rd-8th									FD							
Y On The Fly** (Half Day)	3rd-8th								AM or PM				9-12pm/1-4pm	\$289	\$306	\$414	
SPECIAL SERVICES CAMPS																	
HAWKS Inclusion 1:1	K-8th	FD	FD	FD	FD	FD	FD	FD	FD	FD		M-F	9-4pm	\$758	N/A		
HAWKS High School Camp	9th-12th	PM	PM	PM	PM	PM	PM	PM	PM	PM			12-4pm	\$323	\$334	\$370	
HAWKS High School Camp 1:1 Aide		PM	PM	PM	PM	PM	PM	PM	PM	PM				\$656	\$667	\$703	
SUNSET CAMPS																	
Flag Football Camp	1st-6th											M-F	4:15-5:15pm	\$182	\$197	\$212	
Sticky Finger Deserts																	
CAMP ADD-ONS																	
Extended AM- Before Camp*	K-8th	•	•	•	•	•	•	•	•	•	•	M-F	7:30-9am	\$98	\$119	\$145	
Extended AM/PM*		•	•	•	•	•	•	•	•	•	•		•	7:30-9am/ 4-6pm	\$139	\$160	\$207
Extended PM- After Camp*		•	•	•	•	•	•	•	•	•	•		•	4-6pm	\$98	\$119	\$145
Swim Lessons**		•	•	•	•	•	•	•	•	•	•		•	T	AM or PM	\$30	\$30
Lunch Bunch*		•	•	•	•	•	•	•	•	•	•	•	M-F	12-1pm	\$67	\$87	\$103

*PRORATION AVAILABLE. ** FINANCIAL ASSISTANCE & PROATION DO NOT APPLY TO THIS CAMP.

PRESCHOOL CAMPS

Week 1 6/9-6/13	Week 2 6/16-6/20	Week 3 6/23-6/27	Week 4 6/30-7/4 *No Camp 7/4	Week 5 7/7-7/11	Week 6 7/14-7/18	Week 7 7/21-7/25	Week 8 7/28-8/1	Week 9 8/4-8/8	Week 10 8/11-8/15
---------------------------	----------------------------	----------------------------	---	---------------------------	----------------------------	----------------------------	---------------------------	--------------------------	-----------------------------

LITTLE PIONEERS

Ages: 3 years. Days: M-F. Session length: 1 week.

This is the perfect program to introduce little ones to camp. This camp runs in the morning only, from 9:00am-12:00pm. Daily activities include songs, crafts, stories, games, outdoor play, and more! Additionally, we have weekly enrichment, dance, and art classes facilitated by our NSYMCA programs department staff. Campers will develop friendships, learn independence, practice sharing and teamwork in a safe, supervised, and caring environment. Swimming not available. They do not need to be toilet trained. If you are interested in a 3 or 4 day prorated week, please fill out a physical registration form. **Minimum of 3 days required.**

Camp Name	Weeks Offered	Time	Ratio	\$YM Before 3/2	\$YM After 3/2	\$NM
Little Pioneers AM*	1-10	9am-12pm	1:6	\$170	\$185	\$237
*PRORATION AVAILABLE.						



PATHFINDERS

Age: 4 years. Days: M-F. Session length: 1 week.

This camp is packed with a variety of indoor and outdoor activities from arts & crafts, sports, games, and more! Additionally, we have weekly enrichment dance and art classes facilitated by our NSYMCA programs department staff. Swim lessons are included for Pathfinders only. Pathfinders will swim three times a week (2 mornings, 1 afternoon). Each swim session is a formal lesson facilitated by our aquatics staff. Children must be toilet trained. If you are interested in a 3 or 4 day prorated week, please fill out a physical registration form. **Minimum of 3 days required.**

Camp Name	Weeks Offered	Time	Ratio	\$YM Before 3/2	\$YM After 3/2	\$NM
Pathfinders AM*	1-10	9am-12pm	1:6	\$186	\$201	\$279
Pathfinders FD*	1-10	9am-4pm	1:6	\$264	\$280	\$389
*PRORATION AVAILABLE.						



TRADITIONAL DAY CAMP

Grades: K-5 **Days:** M-F. **Session length:** 1 week.

Traditional Day Camp is perfect for children who like a bit of everything— from sports and games, to arts and crafts, they will experience it all! Campers will learn new things while making friends and having fun along the way. Each week is themed and jam-packed with age-appropriate and engaging activities. Activities include weekly field trips, art projects, sports, games, outdoor activities, open swim, special events, crafts, large group games, and so much more. Camps will be divided by age. **Proration does not apply.**

At the NSYMCA, our flexibility to meet the needs of our families and communities is truly what sets us apart. And while we do accommodate half-day registrations for our Traditional Camps, it is **HIGHLY** recommended to register for **FULL-DAY**.

Full-day registration is the only way to receive the **COMPLETE** Traditional Camp experience. Half-day campers will miss out on weekly activities.

'AM ONLY' CAMP EXPERIENCE

- **CAMPERS CHOICE DAY (WED)**
- **ALL CAMP EVENTS (FRI)**
- **ART LESSONS (WEEKLY)**
- **SWIM LESSONS (OPTIONAL)**
- **NO FIELD TRIPS**
- **NO OPEN SWIM**
- **NO SPECIAL LUNCH (FRI)**

'PM ONLY' CAMP EXPERIENCE

- **OPEN SWIM (MON, WED, FRI)**
- **SWIM LESSONS (Optional)**
- **NO CAMPERS CHOICE DAY**
- **NO ALL CAMP EVENTS**
- **NO ART LESSONS**
- **NO FIELD TRIPS**
- **NO SPECIAL LUNCH (FRI)**

'FULL DAY' CAMP EXPERIENCE

- **CAMPERS CHOICE DAY (WED - AM)**
- **ALL CAMP EVENTS (FRI - AM)**
- **ART LESSONS (WEEKLY - AM)**
- **OPEN SWIM (MON, WED, FRI - PM)**
- **SWIM LESSONS (Optional)**
- **FIELD TRIPS (TH - FULL DAY)**
- **SPECIAL LUNCH (FRI)**

*SWIM LESSONS (TUES—WEEKS 1-10)

Swim lessons are available for Traditional, Navigator, and Sports Camp only. All swim lessons are facilitated by our Aquatics staff. Lessons take place each Tuesday and specific times will be assigned each week. \$30 per lesson (Member) & \$35 per lesson (Non-Member), per child. Swim lessons are an optional add on.

Camp Name	Grade/ Age	Time	Ratio	\$YM Before 3/2	\$YM After 3/2	\$NM
Earth Trekkers FD	5 yrs	9am-4pm	1:8	\$254	\$269	\$379
Earth Trekkers AM		9am-12pm		\$176	\$191	\$254
Earth Trekkers PM		1-4pm				
Voyagers FD	1st	9am-4pm		\$254	\$269	\$379
Voyagers AM		9am-12pm		\$176	\$191	\$254
Voyagers PM		1-4pm				
Trailblazers FD	2nd-3rd	9am-4pm		\$254	\$269	\$379
Trailblazers AM		9am-12pm		\$176	\$191	\$254
Trailblazers PM		1-4pm				
Adventurers FD	4th-5th	9am-4pm	1:10	\$254	\$269	\$379
Adventurers AM		9am-12pm		\$176	\$191	\$254
Adventurers PM		1-4pm				



**EARTH
TREKKERS
5 YRS OLD**



**VOYAGERS
1ST GRADE**



**TRAILBLAZERS
GRADES
2-3**



**ADVENTURERS
GRADES
4-5**

CAMPS FOR MIDDLE SCHOOLERS

Week 1 6/9-6/13	Week 2 6/16-6/20	Week 3 6/23-6/27	Week 4 6/30-7/4 *No Camp 7/4	Week 5 7/7-7/11	Week 6 7/14-7/18	Week 7 7/21-7/25	Week 8 7/28-8/1	Week 9 8/4-8/8	Week 10 8/11-8/15
---------------------------	----------------------------	----------------------------	---	---------------------------	----------------------------	----------------------------	---------------------------	--------------------------	-----------------------------



NAVIGATOR CAMP

Grades: 6-8. Days: M-F. Session length: 1 week.

Preteens discover who they are and what they can achieve in a safe and fun camp environment! This NSYMCA program combines day camp with leadership and service. The Navigator Camp will cultivate skills and values that promote positive behaviors and good relationships. In this well-rounded camp experience, our weekly activities will include games, crafts, sports, field trips and more. **Proration does not apply.**

NAVIGATOR CAMP EXPERIENCE:

- Art Lessons (WEEKLY)
- Open Swim (MON, WED, FRI)
- Campers Choice Day (WED)
- Field Trips (TH)
- All Camp Events (FRI)
- Special Lunch (FRI)

LOCK-IN*

(Week 3: 6/27)

The Navigators will enjoy a fun lock-in at the NSYMCA. Swimming, games, movie, dinner, and MORE! The lock-in is an optional add on.

Camp Name	Weeks Offered	Time/Day	Ratio	\$YM Before 3/2	\$YM After 3/2	\$NM
Navigators FD	1-10	9am-4pm	1:10	\$286	\$302	\$416
Lock-in**	3	F	1:10	\$52	\$52	\$62

****Must be registered for that week of camp**

COUNSELOR IN TRAINING (CIT)

Grades: 8-9. Days: M-F. Session length: 5 weeks.

The Counselor-in-Training (CIT) program is a 5-week intensive, hands on training experience that gives teens valuable insight into the role of a camp counselor. All applicants must apply online. This is a very limited program. Not all applicants who apply will be accepted. Acceptances will be determined by the quality of online applications and interviews. Applicants must be an NSYMCA member. **Scholarship and financial aid do not apply. Proration does not apply.**

TO APPLY & MORE INFORMATION:

<https://nsymca.org/summer-camp>

APPLICATION TIMELINE:

December 2nd - February 14th
All decisions will be announced on Monday, February 17th.

SESSION INFORMATION

Participants accepted into the program must choose between the two sessions below.

Participants may not work both sessions and cannot adjust their schedules.

Camp Name	Grades	Weeks Offered	Days	Time	Capacity	\$YM
CIT Program (Session 1)	8-9	1-5	M-F	9:00 am-4:00 pm	12	\$546
CIT Program (Session 2)		6-10				



This program is supported by Allstate

SPORTS & GYMNASTICS CAMPS

Week 1 6/9-6/13	Week 2 6/16-6/20	Week 3 6/23-6/27	Week 4 6/30-7/4 *No Camp 7/4	Week 5 7/7-7/11	Week 6 7/14-7/18	Week 7 7/21-7/25	Week 8 7/28-8/1	Week 9 8/4-8/8	Week 10 8/11-8/15
---------------------------	----------------------------	----------------------------	---	---------------------------	----------------------------	----------------------------	---------------------------	--------------------------	-----------------------------



This program was supported by the Ruth Schultz Bright Days Fund

SPORTS CAMP

Grades: 1-6. Days: M-F. Session length: 1 week.

This camp is for campers who enjoy all sports. They'll focus on fundamentals, skills, sportsmanship, teamwork, and learning from mistakes. Campers will be grouped by age: Rookies (grades 1-2), Veterans (grades 3-4), and Legends (grades 5-6). The camp includes Thursday field trips, with optional swim lessons for an additional fee.

Proration does not apply.

Camp Name	Weeks Offered	Time	Ratio	\$YM Before 3/2	\$YM After 3/2	\$NM
Sports Camp FD	1-10	9am-4pm	1:8	\$254	\$269	\$379
Sports Camp AM		9am-12pm		\$176	\$191	\$254
Sports Camp PM		1-4pm				

GYMNASTICS CAMP

Grades: 1-6. Days: M-F. Session length: 1 week.

Gymnastics Camp is open for all recreational-level gymnasts entering 1st-6th grade and is designed to teach basic fundamentals on floor, uneven bars, balance beam, and vault. The day includes: group warm-up, instruction through small-group skill development work, dance, games, and snack time. For more information contact [Alex Brodell at abrodell@nsymca.org](mailto:abrodell@nsymca.org). **Proration does not apply. No swim lessons or field trips.**

PRE-TEAM/TEAM SUMMER CAMP

Grades: 1-8 with Director's Approval. Days: M-F. Session length: 1 week.

The Pre-Team/Team Summer Camp is for NSYMCA gymnasts currently enrolled in our Pre-Team and Competitive Team programs or gymnasts who will be moving up to Pre-Team/Team next season. Competitive Team members must be NSYMCA members. Director approval required. For more information contact [Alex Brodell at abrodell@nsymca.org](mailto:abrodell@nsymca.org). **Proration does not apply. No swim lessons or field trips.**

Camp Name	Weeks Offered	Time	Ratio	\$YM Before 3/2	\$YM After 3/2	\$NM
Gymnastics Camp AM	1-10	9am-12pm	1:8	\$187	\$204	\$266
Pre-Team/Team Gymnastics AM				\$200	\$216	\$278



DANCE & CHEER CAMPS

Week 1 6/9-6/13	Week 2 6/16-6/20	Week 3 6/23-6/27	Week 4 6/30-7/4 *No Camp 7/4	Week 5 7/7-7/11	Week 6 7/14-7/18	Week 7 7/21-7/25	Week 8 7/28-8/1	Week 9 8/4-8/8	Week 10 8/11-8/15
---------------------------	----------------------------	----------------------------	---	---------------------------	----------------------------	----------------------------	---------------------------	--------------------------	-----------------------------

BEGINNING DANCE CAMP

Grades: 3-6. Days: M-F. Session length: 1 week.

This camp is a great introduction to the world of dance. No experience needed! Beginning Dance Camp will help teach and introduce technique while building confidence. Campers will learn classical styles such as ballet, jazz, modern, & MORE! For more information contact **Val Lober at vlober@nsymca.org**. **Proration does not apply.**
No swim lessons or field trips.

Camp Name	Weeks Offered	Time	Ratio	\$YM Before 3/2	\$YM After 3/2	\$NM
Beginning Dance Camp PM	8	1-4pm	1:8	\$257	\$272	\$330



INTERMEDIATE DANCE CAMP

Grades: 4-8. Days: M-F. Session length: 2 weeks.

Intermediate Dance Camp is designed to give experienced dancers a chance to continue to build confidence and improve their technique. Campers will take class and learn choreography in classical styles such as ballet, jazz, modern, & MORE! Families will be invited to a showcase on the final day of the two-week camp session. Registration for both weeks is recommended. For more information contact **Val Lober at vlober@nsymca.org**. **Director approval required. Proration does not apply. No swim lessons or field trips.**

Camp Name	Weeks Offered	Time	Ratio	\$YM Before 3/2	\$YM After 3/2	\$NM
Intermediate Dance Camp PM	2-3	1-4pm	1:8	\$260	\$289	\$346



CHEER CAMP

Grades: 2-6. Days: M-F. Session length: 2 weeks.

Campers will learn the basics of cheerleading such as chants and stunting, plus pom, jazz and hip-hop dance techniques. Families will be invited to a showcase on the final day of the two-week camp session. Registration for both weeks is recommended.
Proration does not apply. No swim lessons or field trips.

Camp Name	Weeks Offered	Time	Ratio	\$YM Before 3/2	\$YM After 3/2	\$NM
Cheer Camp PM	5-6	1-4pm	1:8	\$223	\$238	\$295



SPECIALTY CAMPS

Week 1 6/9-6/13	Week 2 6/16-6/20	Week 3 6/23-6/27	Week 4 6/30-7/4 *No Camp 7/4	Week 5 7/7-7/11	Week 6 7/14-7/18	Week 7 7/21-7/25	Week 8 7/28-8/1	Week 9 8/4-8/8	Week 10 8/11-8/15
--------------------	---------------------	---------------------	------------------------------------	--------------------	---------------------	---------------------	--------------------	-------------------	----------------------

ART EXPLORERS



Grades: K-4. **Days:** M-F. **Session length:** 1 week.

Explore art in a fun and creative way! Campers will open up their imagination to learn new art principles and build their artistic skill set. **Proration does not apply.** **No swim lessons or field trips.**

Camp Name	Weeks Offered	Time	Ratio	\$YM Before 3/2	\$YM After 3/2	\$NM
Art Explorers PM	1-9	1-4pm	1:8	\$248	\$263	\$372

BUILDERS & DESTROYERS



Grades: 1-6. **Days:** M-F. **Session length:** 1 week.

Calling all creative makers who love a little demolition! Campers will build and destroy masterpieces through activities like STEAM engineering, crafting catapults, creating exploding boomerangs, and more. The summer will culminate in a cardboard boat race regatta. **Proration does not apply to this camp.** **No swim lessons or field trips.**

Camp Name	Weeks Offered	Time	Ratio	\$YM Before 3/2	\$YM After 3/2	\$NM
Builders & Destroyers PM	10	1-4pm	1:8	\$227	\$242	\$352

SUNSET CAMPS

FLAG FOOTBALL



In Partnership with OTG Sports Management

Grades: 1-6. **Days:** M-F. **Session length:** 1 week.

Led by former Chicago Bear Chris Martin, On-The-Go Sports offers a high-energy, non-contact football camp focusing on fundamentals like passing, receiving, and blocking. Enjoy top-tier coaching, scrimmages, and guest speakers. **Proration does not apply. No swim lessons or field trips.** **To learn more about OTG Sports:** otgsports.com.

Camp Name	Weeks Offered	Time	Ratio	\$YM Before 3/2	\$YM After 3/2	\$NM
OTG Flag Football	7-8	4:15 - 5:15 pm	1:10	\$182	\$197	\$212

STICKY FINGER DESERTS

Presented by:



Grades: 1-6. **Days:** M-F. **Session length:** 1 week.

Extend your camp day with a tasty treat! Kids will enjoy cooking and devouring exciting, healthy recipes. Check out our weekly lineup and join the fun! Perfect for all ages. **Proration does not apply. No swim lessons or field trips.**

Camp Name	Weeks Offered	Time	Ratio	\$YM Before 3/2	\$YM After 3/2	\$NM
Sticky Finger Deserts	5	4:15- 5:15pm	1:10	\$182	\$197	\$212

SPECIALTY CAMPS

Week 1 6/9-6/13	Week 2 6/16-6/20	Week 3 6/23-6/27	Week 4 6/30-7/4 *No Camp 7/4	Week 5 7/7-7/11	Week 6 7/14-7/18	Week 7 7/21-7/25	Week 8 7/28-8/1	Week 9 8/4-8/8	Week 10 8/11-8/15
---------------------------	----------------------------	----------------------------	---	---------------------------	----------------------------	----------------------------	---------------------------	--------------------------	-----------------------------

CRAFT-TASTIC

NEW!

Grades: 1-6. **Days:** M-F. **Session length:** 1 week.

It's time to get crafty this summer! Campers will create, design, and take home different daily SPECIAL craft projects. This summer there are TWO different unique and original camp themes to choose from! Special crafts will be different for each session. **Proration does not apply. No swim lessons or field trips.**

Sublimation Week with Ms. Kim

- **Week #3 (6/23-6/27) 1-4pm**
- **Week # 6 (7/14-7/18) 9am-12pm**

Activities may include: sublimation, light up fairy jars, acrylic pour, vinyl, and MORE!

Fiber Arts Week with Ms. Alex

- **Week #5 (7/7-7/11) 9am-12pm**
- **Week #8 (7/28-8/1) 1-4-pm**

Activities may include fiber arts, crochet, amigurumi, tie-dye, and MORE!



Camp Name	Weeks Offered	Time	Ratio	\$YM Before 3/2	\$YM After 3/2	\$NM
Craft-tastic!	3	1-4pm	1:8	\$248	\$263	\$372
	5	9am-12pm				
	6	9am-12pm				
	8	1-4pm				

GETTING MESSY



Grades: 1-6. **Days:** M-F. **Session length:** 1 week.

It's time to get slimy, gunky, and sticky! Campers will have fun participating in messy crafts, games, and activities using nothing but: slime, bubbles, shaving cream, foam, foods, paints, & MORE! Be prepared to bring clothes to change into... you'll need it! Activities will differ each session.

Proration does not apply. No swim lessons or field trips.

Camp Name	Weeks Offered	Time	Ratio	\$YM Before 3/2	\$YM After 3/2	\$NM
Getting Messy	2	9am-12pm	1:8	\$227	\$242	\$352
	7	1-4pm				

JEWELRY & BEADS



Grades: 1-6. **Days:** M-F. **Session length:** 1 week.

Does your child love designing and creating their own jewelry and bead art? Then Jewelry & Bead is the perfect place for them! Campers will become expert designers and creators partaking in fun-filled, hands on, activities using a wide variety of materials and beads! **Proration does not apply.**

No swim lessons or field trips.

Camp Name	Weeks Offered	Time	Ratio	\$YM Before 3/2	\$YM After 3/2	\$NM
Jewelry & Beads	1	1-4pm	1:8	\$227	\$242	\$352
	8	9am-12pm				

SPECIALTY CAMPS

Week 1 6/9-6/13	Week 2 6/16-6/20	Week 3 6/23-6/27	Week 4 6/30-7/4 *No Camp 7/4	Week 5 7/7-7/11	Week 6 7/14-7/18	Week 7 7/21-7/25	Week 8 7/28-8/1	Week 9 8/4-8/8	Week 10 8/11-8/15
---------------------------	----------------------------	----------------------------	---	---------------------------	----------------------------	----------------------------	---------------------------	--------------------------	-----------------------------

GO WILD!

NEW!

Grades: 1-6. **Days:** M-F. **Session length:** 1 week.

Explore the wilderness around us! Campers will learn all about different animals, birds, plants, and insects. Campers will have fun creating projects, crafts, and playing games all centered around wildlife, conservation, and going green. **Proration does not apply.** **No swim lessons or field trips.**



Camp Name	Weeks Offered	Time	Ratio	\$YM Before 3/2	\$YM After 3/2	\$NM
Go Wild! AM	4	9am-12pm	1:8	\$227	\$242	\$352

MAD SCIENTISTS

Grades: 1-6. **Days:** M-F. **Session length:** 1 week.

Does your child love science projects and getting a little CRAZY? Then Mad Scientists is the perfect place for them! Campers will partake in fun-filled, hands on, science and STEM experiments like: Mentos geysers, exploding watermelons, peeps, soap, slime and MORE! Activities will differ each session. **Proration does not apply.** **No swim lessons or field trips.**



Camp Name	Weeks Offered	Time	Ratio	\$YM Before 3/2	\$YM After 3/2	\$NM
Mad Scientist PM	4	1-4pm	1:8	\$227	\$242	\$352

WHODUNNIT?

Grades: 1-6. **Days:** M-F. **Session length:** 1 week.

Campers will learn how to find evidence, uncover clues and follow their hunches during this thrilling mystery-filled week of camp! Through hands-on projects like deciphering codes, invisible ink, and scavenger hunts, your child will use their smarts to become camp heroes by solving one of the biggest mysteries of the summer. **Proration does not apply.** **No swim lessons or field trips.**



Camp Name	Weeks Offered	Time	Ratio	\$YM Before 3/2	\$YM After 3/2	\$NM
Whodunnit? AM	9	9am-12pm	1:8	\$227	\$242	\$352

PREMIUM SPECIALTY CAMPS

Week 1 6/9-6/13	Week 2 6/16-6/20	Week 3 6/23-6/27	Week 4 6/30-7/4 *No Camp 7/4	Week 5 7/7-7/11	Week 6 7/14-7/18	Week 7 7/21-7/25	Week 8 7/28-8/1	Week 9 8/4-8/8	Week 10 8/11-8/15
---------------------------	----------------------------	----------------------------	---	---------------------------	----------------------------	----------------------------	---------------------------	--------------------------	-----------------------------

CULINARY CAMP

Grades: 1-6. **Days:** M-F. **Session length:** 1 week.

A camp where kids can play with their food! We're excited to welcome back professional chef Rachel Gibson, who has been leading our culinary camps with incredible success since 2021! This summer, Chef Rachel returns with even more fun-filled cooking adventures. Campers will learn essential kitchen skills and basic cooking techniques, all while having a blast in the kitchen. **Financial assistance and proration do not apply. No swim lessons or field trips.**

NEW THIS YEAR: Culinary Camps will be divided into two age groups:

- Little's (Grades 1-3)
- Big's (Grades 4-6).

A Whole New World – Little's: Week 2 Big's: Week 3

Get ready for a culinary adventure around the globe with a dash of Disney magic! Campers will explore diverse cultures, flavors, and cooking techniques while preparing dishes inspired by iconic cuisines from various countries. From mastering international classics to adding a touch of Disney-inspired creativity, this camp promises to be an unforgettable, flavorful experience that will expand their culinary horizons.

All About Breakfast – Little's: Week 6 Big's: Week 7

Rise and shine, breakfast lovers! This camp is all about perfecting the most important meal of the day. Campers will learn to cook eggs just right, flip fluffy specialty pancakes, make crispy candied bacon, and much more. By the end of the week, they'll have all the skills needed to impress their family with an amazing homemade breakfast spread!

Just Desserts – Little's: Week 9 Big's: Week 10

Sweet tooth's, unite! In this deliciously fun camp, campers will dive into the world of dessert-making and learn how to create show-stopping sweets. From baking gooey monster cookies to making fun cake pops, they'll master the art of crafting irresistible treats. The week will culminate in a 'Nailed It'-inspired challenge where campers can showcase their dessert creations and creativity!



Camp Name	Weeks Offered	Time	Ratio	\$YM Before 4/2	\$YM After 4/2	\$NM
A Whole New World	2	1-4pm	1:8	\$289	\$305	\$411
	3					
All About Breakfast	6					
	7					
Just Desserts	9					
	10					

PREMIUM SPECIALTY CAMPS

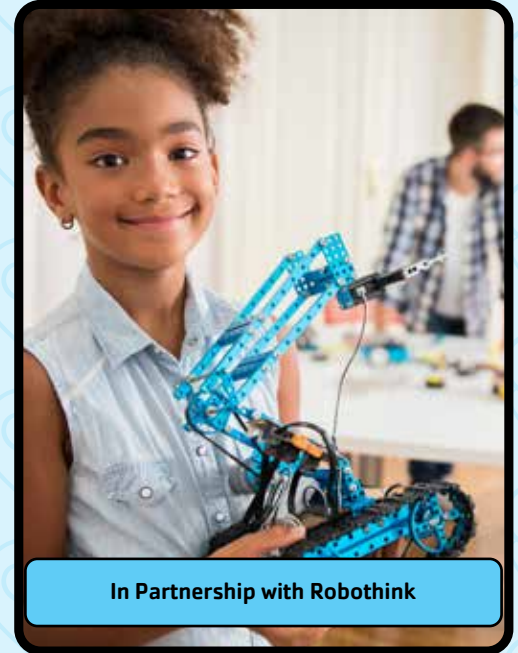
Week 1 6/9-6/13	Week 2 6/16-6/20	Week 3 6/23-6/27	Week 4 6/30-7/4 *No Camp 7/4	Week 5 7/7-7/11	Week 6 7/14-7/18	Week 7 7/21-7/25	Week 8 7/28-8/1	Week 9 8/4-8/8	Week 10 8/11-8/15
---------------------------	----------------------------	----------------------------	---	---------------------------	----------------------------	----------------------------	---------------------------	--------------------------	-----------------------------

BATTLE ROBOTS

Grades: 1-6. **Days:** M-F. **Session length:** 1 week.

Attention all warriors and engineers! Prepare for an adrenaline-fueled camp where you'll build and customize an impressive array of mechanical warriors. When you're battle ready, step into the arena and face off with other participants. Using motors, gears, axles and our top secret hardware, victory will be within your grasp! **Financial assistance and proration do not apply. No swim lessons or field trips. To learn more about Robothink: myrobothink.com.**

Camp Name	Weeks Offered	Time	Ratio	\$YM Before 3/2	\$YM After 3/2	\$NM
Battle Robots AM	6	9am-12pm	1:8	\$289	\$305	\$411



In Partnership with Robothink

LITTLE VETERINARIAN SCHOOL: DOG

Grades: 2-4. **Days:** M-F. **Session length:** 1 week.

After "adopting" their very own plush puppy, students will role-play the key responsibilities of a veterinarian, including how to properly perform a nose-to-tail exam. These future veterinarians will learn how to sew stitches, remove ticks, make healthy treats, and vaccinate their dog. Led by Little Medical School Staff. **Financial assistance and proration do not apply. No swim lessons or field trips. To learn more about Little Medical School: littlemedicalschoo.com.**

Camp Name	Weeks Offered	Time	Ratio	\$YM Before 3/2	\$YM After 3/2	\$NM
Little Veterinarians AM	8	9am-12pm	1:8	\$300	\$316	\$422



In Partnership with Little Medical School

PREMIUM SPECIALTY CAMPS

Week 1 6/9-6/13	Week 2 6/16-6/20	Week 3 6/23-6/27	Week 4 6/30-7/4 *No Camp 7/4	Week 5 7/7-7/11	Week 6 7/14-7/18	Week 7 7/21-7/25	Week 8 7/28-8/1	Week 9 8/4-8/8	Week 10 8/11-8/15
--------------------	---------------------	---------------------	------------------------------------	--------------------	---------------------	---------------------	--------------------	-------------------	----------------------



CSI: CRIME SCENE INVESTIGATION

Grades: 2-5. Days: M-F. Session length: 1 week.

Become a crime scene investigator! Learn forensics, evidence gathering, and solve mysteries with your own detective kit. Work in groups to conduct science experiments in the crime lab and use your skills to crack the case and save the Minds In Motion Laboratory. Get ready to think like a real detective! **Financial assistance and proration do not apply. No swim lessons or field trips.** To learn more about Minds In Motion: mindsinmotionllc.com.

Camp Name	Weeks Offered	Time	Ratio	\$YM Before 3/2	\$YM After 3/2	\$NM
CSI AM	1	9am-12pm	1:8	\$289	\$305	\$411

In Partnership with Minds in Motion



SEW MUCH FUN

Grades: 2-6. Days: M-F. Session length: 1 week.

Dive into the fun, crafty and creative world of machine sewing! During this fun week-long camp, your camper will learn the basics of the sewing machine and make some awesome projects. Project examples are: Fleece PJ Pants and Emoji Pillows! No experience necessary. Your camper will LOVE making these awesome projects that they can use and show off all summer long. **Financial assistance and proration do not apply. No swim lessons or field trips.** To learn more about Ciao Bella Sewing: ciaobellasewing.com.

Camp Name	Weeks Offered	Time	Ratio	\$YM Before 3/2	\$YM After 3/2	\$NM
Sew Much Fun	5	1-4pm	1:8	\$300	\$316	\$422
	7	9am-12pm				

In Partnership with Ciao Bella Sewing



OUTER SPACE & PHYSICS

Grades: 1-6. Days: M-F. Session length: 1 week.

Join the exciting world of space exploration and build your own Orbiting Solar System Kit! Assemble your model, learn about our solar system, and watch the planets move with a wind-up motor. Experience hands-on activities with physics, air pressure, and density, and check out a real meteorite fragment! Watch a rocket soar 50 feet, build a stunt plane, and explore the four forces of flight. Plus, witness cool experiments like an egg being sucked into a bottle and a tornado in action. Don't miss this fun, hands-on camp! **Financial assistance and proration do not apply. No swim lessons or field trips.** To learn more about Minds In Motion: mindsinmotionllc.com.

Camp Name	Weeks Offered	Time	Ratio	\$YM Before 3/2	\$YM After 3/2	\$NM
Outer Space & Physics PM	1	1-4pm	1:8	\$289	\$305	\$411

In Partnership with Minds In Motion

PREMIUM SPECIALTY CAMPS

Week 1 6/9-6/13	Week 2 6/16-6/20	Week 3 6/23-6/27	Week 4 6/30-7/4 *No Camp 7/4	Week 5 7/7-7/11	Week 6 7/14-7/18	Week 7 7/21-7/25	Week 8 7/28-8/1	Week 9 8/4-8/8	Week 10 8/11-8/15
---------------------------	----------------------------	----------------------------	---	---------------------------	----------------------------	----------------------------	---------------------------	--------------------------	-----------------------------

VIDEO GAME PARTY TRUCK

Grades: 1-6. **Days:** M-F. **Session length:** 1 week.

The Video Game Party Truck at the Y is the only camp where kids can game in person with friends! It features a full library of popular multiplayer games across XBOX, Nintendo, and PS4. Campers can play on 7 different screens, both inside and outside the truck. **Financial assistance and proration do not apply. No swim lessons or field trips.** To learn more about Rolling Video Games Chicago Inc: rollingvideogameschicago.com.

Camp Name	Weeks Offered	Time	Ratio	\$YM Before 3/2	\$YM After 3/2	\$NM
Video Game Party Truck AM	2	9am-12pm	1:8	\$289	\$305	\$411
	5					



In Partnership with Rolling Video Games Chicago Inc.

ENGINEER RACE CARS

Grades: 1-6. **Days:** M-F. **Session length:** 1 week.

Rev up your engines and hit the race track with RoboThink! Get ready for an exciting camp where you will build and race a fleet of extraordinary race cars. But that's not all! You will also dive deep into the world of automotive engineering. Put on your racing gloves and join us for an epic ride! **Financial assistance and proration do not apply. No swim lessons or field trips.**

To learn more about RoboThink: myrobothink.com.

Camp Name	Weeks Offered	Time	Ratio	\$YM Before 3/2	\$YM After 3/2	\$NM
Engineer Race Cars AM	10	9am-12pm	1:8	\$289	\$305	\$411



In Partnership with Robothink

FISHING CAMP

Grades: 2-6. **Days:** M-F. **Session length:** 1 week.

Get ready to go fishing! Led by expert Robert Yonkee, this camp teaches beginners the basics of fishing, including knot tying, casting, tackle, fish identification, and safety. Daily trips to local ponds will offer hands-on fishing for Bluegill, Crappie, Trout, Catfish, and Bass. This outdoor camp runs rain or shine, so come prepared! Fishing rods and tackle are provided, though participants can bring their own if preferred. **Financial assistance and proration do not apply. No swim lessons or field trips.**

Camp Name	Weeks Offered	Time	Ratio	\$YM Before 3/2	\$YM After 3/2	\$NM
Fishing AM	3	9am-12pm	1:8	\$300	\$316	\$422



FIELD TRIP SPECIALTY CAMPS

Week 1 6/9-6/13	Week 2 6/16-6/20	Week 3 6/23-6/27	Week 4 6/30-7/4 *No Camp 7/4	Week 5 7/7-7/11	Week 6 7/14-7/18	Week 7 7/21-7/25	Week 8 7/28-8/1	Week 9 8/4-8/8	Week 10 8/11-8/15
---------------------------	----------------------------	----------------------------	---	---------------------------	----------------------------	----------------------------	---------------------------	--------------------------	-----------------------------

WATER PARK CAMP



Grades: 4-8. **Days:** M-F. **Session length:** 1 week.

Make a splash with daily trips to different water parks like Rainbow Falls, Barefoot Bay, and Mystic Waters. Locations TBD. **For an update on field trip locations, please contact Camp Director Ricky Gonzalez (rgonzalez@nsymca.org).**

Financial assistance and proration do not apply.

Camp Name	Weeks Offered	Time	Ratio	\$YM Before 3/2	\$YM After 3/2	\$NM
Water Park FD	6	9am-4pm	1:8	\$353	\$369	\$483

Y ON THE FLY



Grades: 3-8. **Days:** M-F. **Session length:** 1 week.

Attend two field trips daily, with morning and afternoon destinations such as Game Show Battle Room, Two Hours of Freedom, and Mini Golf. Flexible registration: Full Day, AM Only, or PM Only. Locations TBD. **For an update on field trip locations, please contact Camp Director Ricky Gonzalez (rgonzalez@nsymca.org).**

Financial assistance and proration do not apply.

Camp Name	Weeks Offered	Time	Ratio	\$YM Before 3/2	\$YM After 3/2	\$NM
Y On The Fly FD	7	9am-4pm	1:8	\$353	\$369	\$483
Y On The Fly HD		9am-12pm or 1-4pm		\$289	\$306	\$414

BEST WEEK EVER!



Grades: 4-8. **Days:** M-F. **Session length:** 1 week.

End the summer with five exciting field trips to top camper voted destinations like Action Territory, Main Event, and Bear Paw Beach. Locations TBD, weather permitting. **For an update on field trip locations, please contact Camp Director Ricky Gonzalez (rgonzalez@nsymca.org).** **Financial assistance and proration do not apply.**

Camp Name	Weeks Offered	Time	Ratio	\$YM Before 3/2	\$YM After 3/2	\$NM
Best Week Ever FD	10	9am-4pm	1:8	\$353	\$369	\$483

CHICAGO TROTTERS



Grades: 4-8. **Days:** M-F. **Session length:** 1 week.

Explore Chicago's best spots like Shedd Aquarium, the Museum of Science & Industry, and River Boat Tour. Locations TBD, weather permitting. **For an update on field trip locations, please contact Camp Director Ricky Gonzalez (rgonzalez@nsymca.org).**

Financial assistance and proration do not apply.

Camp Name	Weeks Offered	Time	Ratio	\$YM Before 3/2	\$YM After 3/2	\$NM
Chicago Trotters FD	5	9am-4pm	1:8	\$353	\$369	\$483

FIELD TRIP SPECIALTY CAMPS

Week 1 6/9-6/13	Week 2 6/16-6/20	Week 3 6/23-6/27	Week 4 6/30-7/4 *No Camp 7/4	Week 5 7/7-7/11	Week 6 7/14-7/18	Week 7 7/21-7/25	Week 8 7/28-8/1	Week 9 8/4-8/8	Week 10 8/11-8/15
--------------------	---------------------	---------------------	------------------------------------	--------------------	---------------------	---------------------	--------------------	-------------------	----------------------

OUTDOOR WORLD



Grades: 3-8. **Days:** M-F. **Session length:** 1 week.

Perfect for nature lovers, with field trips like canoeing at Lake Arlington, visits to Atwood Nature Center, and the DuPage Wildlife Center. Locations TBD, weather permitting. **For an update on field trip locations, please contact Camp Director Ricky Gonzalez (rgonzalez@nsymca.org).** **Financial assistance and proration do not apply.**

Camp Name	Weeks Offered	Time	Ratio	\$YM Before 3/2	\$YM After 3/2	\$NM
Outdoor World FD	9	9am-4pm	1:8	\$353	\$369	\$483

THRILL SEEKERS



Grades: 4-8. **Days:** M-F. **Session length:** 1 week.

For adventure lovers! Potential activities include zip-lining, rock climbing, and more. Field trip destinations may include: The Forge, Astro Fun World, and Slick City. Locations are TBD, weather permitting, and subject to change. **For an update on field trip locations, please contact Camp Director Ricky Gonzalez (rgonzalez@nsymca.org).** **Financial assistance and proration do not apply.**

Camp Name	Weeks Offered	Time	Ratio	\$YM Before 3/2	\$YM After 3/2	\$NM
Thrill Seekers FD	4	9am-4pm	1:8	\$353	\$369	\$483

ULTIMATE DESTINATIONS



Grades: 3-8. **Days:** M-F. **Session length:** 1 week.

Exciting full-day activities across the North Shore, with potential field trips to FunWay, Kristof's, and Main Event. Locations TBD. **For an update on field trip locations, please contact Camp Director Ricky Gonzalez (rgonzalez@nsymca.org).** **Financial assistance and proration do not apply.**

Camp Name	Weeks Offered	Time	Ratio	\$YM Before 3/2	\$YM After 3/2	\$NM
Ultimate Destinations FD	3	9am-4pm	1:8	\$353	\$369	\$483

WISCONSIN TROTTERS



Grades: 4-8. **Days:** M-F. **Session length:** 1 week.

Explore Wisconsin with daily trips to attractions like Bear Paw Beach, Discovery World, and Boundless Adventure. Locations TBD. **For an update on field trip locations, please contact Camp Director Ricky Gonzalez (rgonzalez@nsymca.org).** **Financial assistance and proration do not apply.**

Camp Name	Weeks Offered	Time	Ratio	\$YM Before 3/2	\$YM After 3/2	\$NM
Wisconsin Trotters FD	8	9am-4pm	1:8	\$353	\$369	\$483

SPECIAL SERVICES

Week 1 6/9-6/13	Week 2 6/16-6/20	Week 3 6/23-6/27	Week 4 6/30-7/4 *No Camp 7/4	Week 5 7/7-7/11	Week 6 7/14-7/18	Week 7 7/21-7/25	Week 8 7/28-8/1	Week 9 8/4-8/8	Week 10 8/11-8/15
---------------------------	----------------------------	----------------------------	---	---------------------------	----------------------------	----------------------------	---------------------------	--------------------------	-----------------------------

HAWKS

The NSYMCA actively supports inclusion and welcomes kids of all abilities. Recognizing the need for quality, adaptive programming for individuals in the North Shore area, the HAWKS programs help individuals gain confidence, promote independence and responsibility, foster friendships, and nurture a healthy and active lifestyle. All programs are supervised by qualified individuals who help promote a safe, friendly, and supportive environment. We believe that consistency is of the utmost importance and we welcome aides provided by the family to attend camp or any of our programs with their child. All aides must be interviewed by the NSYMCA.

All HAWKS campers will be interviewed and screened by Ellen Mirochnick, NSYMCA Coordinator of Special Services. **To be a part of the HAWKS Camp you must fill out a HAWKS application and questionnaire, which can be found on our website at www.nsymca.org.**



HAWKS INCLUSION 1-ON-1

Grades: K-8. Days: M-F. Session length: 1 week.

Space is limited and available on a first-come, first-served basis. HAWKS 1:1 programming is for participants who benefit from individual support. Campers will join traditional or sports camps for their age group and participate to the best of their abilities, with the support of an inclusion counselor. Counselors work to foster an inclusive environment while assisting the whole group. All inclusion counselors attend NSYMCA training prior to camp. **All HAWKS campers will be interviewed and screened by Ellen Mirochnick, NSYMCA Coordinator of Special Services emirochnick@nsymca.org. All HAWKS campers must be NSYMCA members for 6 consecutive months. The registration deadline is March 1st. Must sign up for a minimum of 6 weeks.**

Camp Name	Weeks Offered	Time	Ratio	\$YM
HAWKS Inclusion 1:1 -Full Day	1-9	9am-4pm	1:1	\$758



HAWKS HIGH SCHOOL CAMP

Grades: 9-12. Days: M-F. Session length: 1 week.

This social and recreational camp is for high school students and includes fitness, field trips, and community outings. The group setting, with a maximum of 8 campers, provides opportunities to engage with others while working toward common goals. **For further information please contact Ellen Mirochnick at: emirochnick@nsymca.org. A 1:1 aid is available at an additional cost but must sign up for at least 6 weeks.**

Camp Name	Weeks Offered	Time	Ratio	\$YM Before 3/2	\$YM After 3/2	\$NM
HAWKS High School PM	1-9	12pm-4pm	1:4	\$323	\$334	\$370
HAWKS High School 1:1 Aide			1:1	\$656	\$667	\$703

Camp Add-On Programs & Services

EXTENDED CAMP (BEFORE AND AFTER CAMP)

The Before and After Camp atmosphere is relaxed, safe, and fun! Activities range from indoor and outdoor free play to organized activities such as crafts and games. Before Camp is from 7:30–8:45 am and After Camp is from 4:10–6:00 pm. You can register for one or both. Extended Camp is for Kindergarten and older. No minimum days required. **If your camper requires a one-on-one inclusion counselor contact Ellen Mirochnick for more information at emirochnick@nsymca.org.**

SWIM LESSONS

Add Swim Lessons to your camp day. It is available for 1-day a week on Tuesday. Available to Traditional & Sports only. Financial Assistance is not available. \$30 per lesson (Member) & \$35 per lesson (Non-Member), per child for sign up. Swim lessons can be added during registration, or you can email registrar@nsymca.org at any time to enroll.

LUNCH BUNCH

Lunch Bunch is NOT required for any camper who attends both an 'AM only' camp and a 'PM only' camp. We provide lunch supervision and transitioning at no additional charge.

Add Lunch Bunch and extend your camp day for half day registered campers only! Campers from kindergarten and up can enjoy lunch time with their friends and be supervised by well-trained staff. Lunch Bunch is open to all campers registered for an AM or PM camp with supervision. Campers must bring a lunch Monday–Thursday, while a special lunch is provided on Fridays. No minimum days required. To register for lunch bunch (not available online), please email registrar@nsymca.org.

SNACK SHACK

Skip the snack packing! We offer \$10 Snack Shack cards for your convenience. To purchase a card, simply reach out to registrar@nsymca.org. Most snacks are priced at just \$1.00.

NOW HIRING CAMP STAFF!

PERKS

- NO NIGHTS! NO WEEKENDS! NO SCHEDULE CHANGES!
- CHOOSE FROM DIFFERENT PART-TIME AND FULL-TIME SCHEDULES! TIME OFF AVAILABLE!
- FREE NSYMCA MEMBERSHIP!
- FREE STAFF LUNCH PROVIDED EACH FRIDAY! (ROSATI'S PIZZA, CULVERS, ETC)
- EARN MORE \$\$\$ WITH OUR REFERRAL PROGRAM!
- NO PREREQUISITE EXPERIENCE REQUIRED!

TO LEARN MORE >

RICKY GONZALEZ
(RGONZALEZ@NSYMCA.ORG)



APPLY TODAY!



Camp Registration Form 2025

For office use only	Date:	Initials:
Registration Completed		
Household updated		
Director Approval		

Child Full Name:		Grade: (Fall 2025)		Gender:		D.O.B	
Parent/Guardian Name:		Address:					
		City, State, Zip:					
Cell Phone:		Email 1:					
Emergency Phone <small>(Must be able to receive text messages)</small>		Email 2:					

Week 1 6/9-6/13	Week 2 6/16-6/20	Week 3 6/23-6/27	Week 4 6/30-7/4 <small>*No Camp 7/4</small>	Week 5 7/7-7/11	Week 6 7/14-7/18	Week 7 7/21-7/25	Week 8 7/28-8/1	Week 9 8/4-8/8	Week 10 8/11-8/15
---------------------------	----------------------------	----------------------------	--	---------------------------	----------------------------	----------------------------	---------------------------	--------------------------	-----------------------------

Camp	AM	PM	Full	Week of Camp															
				1	2	3	4	5	6	7	8	9	10						

Additional Camp	AM	PM	Full	Days of the Week					Week of Camp										
				M	Tu	W	Th	F	1	2	3	4	5	6	7	8	9	10	
Little Pioneers: (3 Day minimum)																			
Pathfinders: (3 Day minimum)																			
Extended Camp (Proration Available)																			
Swim Lessons (Optional)																			

Payment Options: Please Check One.			
<input type="checkbox"/>	Payment Plan		
<input type="checkbox"/>	Pay in Full		
For Payment Plans Only: All Payment Plans Must end by 7/15			
Please draft my account on: (Choose one)		<input type="checkbox"/> 1st of the month	<input type="checkbox"/> 15th of month
Starting month on:			
Payment Information			
<input type="checkbox"/>	Credit Card	<input type="checkbox"/>	Check
<input type="checkbox"/>	Cash		
Credit Card #			
Exp:		Name on Card	
<small>I understand that if I fail to make a payment, my camper(s) will not be allowed to attend camp until payment is made. If payment is not made by the Wednesday before the camp starts, my camper will lose their spot in camp. I understand that if I incur any fees, late registrations or change requests, late pick up, t-shirt, extended camp charges, shack shack, and camp store, I authorize the North Suburban YMCA to charge my account using the payment information on file.</small>			
<small>By initialing here, I hereby acknowledge that I've read and understand the parent handbook and NSYMCA's policies available online.</small>			
Signature:			
Membership:			
Members must have a consecutive membership for 6 months to receive the special member-only discount.			
<input type="checkbox"/>	Registering child who is an NSYMCA member and has been an NSYMCA member prior to 10/01/24		
<input type="checkbox"/>	Registering child who became an NSYMCA member after 10/01/24		
<input type="checkbox"/>	Registering Child who will not become an NSYMCA Member		

Would you like to donate to help others by supporting our Community Strong Scholarship Fund?											
<input type="checkbox"/>	\$100	<input type="checkbox"/>	\$50	<input type="checkbox"/>	\$25	<input type="checkbox"/>	\$10	<input type="checkbox"/>	\$5	<input type="checkbox"/>	OTHER

WAIVER OF RISK & RELEASE	
I agree to abide by the facility, program, and membership policies of the NSYMCA at all times while on the premises. I give permission for the above-named participant to be included in photos for publicity purposes. I understand the NSYMCA is not responsible for personal property or personal injury sustained by the participant and I hereby agree to identify and hold harmless the NSYMCA from such losses or injuries. In the event I cannot be reached in an emergency situation involving the above-named participant, I hereby give permission to the program leader to seek medical treatment for the above-named participant. The NSYMCA reserves the right to change or alter any program without notice.	
POLICIES	
Membership must remain current throughout the entire camp period (and maintained for a minimum of 6 months) to qualify for member rates. Prices are subject to change. A refund will be issued if you cancel prior to the registration deadline, or if the NSYMCA cancels camp. A \$30.00 processing fee per camp week (per child) will be issued for any cancellations or transfers at any time. Additionally, there will be a \$30.00 NSF fee for any declined camp payments (payment plans only). Refer to parent guide for complete registration policy. A non-refundable associated fee of 3% will be added to all credit card transactions. Avoid the fee by paying with cash or check. The NSYMCA does not turn anyone away due to inability to pay. If you need assistance, please stop by the Guest Services Desk. Policies are subject to change. By signing below, I acknowledge all of the NSYMCA's Policies.	
Signature:	

One form must be filled out for each camper and turned in at the time of registration.

For more information, please contact Camp Registrar at registrar@nsymca.org

Form must be submitted to complete registration.

Child's Full Name:							School & Grade:			
What should we know about your camper? Please give any information which will help us make this your camper's best summer ever! Include behavior management techniques that your camper responds to positively. Let us know what activities interest your camper.										
Allergies: Additional Health Form Required. See website.										
List any medications your child has taken in the last 12 months:										
Does your child need an Epipen?		Yes	No	Will your child require medication during camp?		Yes	No	If yes, please fill out our medication form at nsymca.org		
If your child has an allergy please fill out additional allergy information and if your child has an epi-pen or inhaler, please fill out our medicine administration form at nsymca.org										
Medical or Physical Restrictions (If Any)		Yes	No	Does your child have an IEP?		Yes	No	504 plan	Yes	No
Does your child have an inclusion aide at school?										
Please describe any additional support your child receives at school and/or during the year (E.G speech, behavior therapy, social work, counseling, etc.)										

REGISTRATION FOR HAWKS CAMPS REQUIRES AN ADDITIONAL SPECIAL SERVICES QUESTIONNAIRE (Download at nsymca.org)

AUTHORIZED PARENT/GUARDIAN CONTACT INFORMATION										
Parent/Guardian 1 Name:										
Primary Phone Number:					Secondary Phone Number:					
Parent/Guardian 2 Name:										
Primary Phone Number:					Secondary Phone Number:					
Pick-up/Emergency Contacts: (When Parent or Guardian cannot be reached)										
Name:						Cell:				
Name:						Cell:				
Name:						Cell:				

PARENT STATEMENT OF UNDERSTANDING										
<p>Please read this form carefully. Sign this form and return to the NSYMCA. No child can attend camp unless all completed forms are on file.</p> <p>1. I understand that the North Suburban YMCA staff and volunteers are not allowed to baby sit or transport children at any time outside of the YMCA camp program, with the exception of relationships established outside of the YMCA and prior to the start of the camp session. Immediate disciplinary action will be taken toward staff and volunteers if a violation is discovered.</p> <p>2. I understand that I am not to leave my child at the North Suburban YMCA or any off-site NSYMCA location unless a YMCA camp staff is there to receive and supervise my child.</p> <p>3. I understand that my child will not be allowed to leave the program with an unauthorized person. Any person authorized to pick up my child must be listed in my child's registration forms or a note written and signed by a parent or legal guardian must be received by NSYMCA staff at least one day prior to the pick up.</p> <p>4. I understand that should a person arrive to pick up my child who is obviously under the influence of alcohol or drugs, for the child's safety, staff may have no recourse but to contact police. Please do not put staff in a position where they have to make this judgment call.</p> <p>5. I understand that the North Suburban YMCA is mandated, by state law, to report any suspected cases of child abuse or neglect to the appropriate authorities for investigation.</p> <p>6. I consent to my child's participation with evaluations and surveys for camp.</p>					<p>7. I understand that the North Suburban YMCA Camp Director reserves the right to dismiss a camper from camp. Such situations will mean the total loss of camper fees as paid by the parent or scholarships given to the child.</p> <p>8. I have received, read, understand, and agree with the policies above and the North Suburban YMCA's Camp policies and parent handbook.</p> <p>9. I give the North Suburban YMCA the right to take pictures and video for marketing purposes.</p> <p>10. I give permission for the North Suburban YMCA to transport the child named above off the property for the purpose of medical care or program activities as deemed appropriate by the director and in the event I cannot be reached in an EMERGENCY. I hereby give permission to the physician selected by the Camp Director, to hospitalize, secure proper treatment for, and to order injection, anesthesia or surgery for my child as named above if I cannot be reached.</p> <p>11. I attest that this registration form in its entirety is correct to my knowledge and understand any changes to the information must occur in writing. I give permission for the child mentioned herein to engage in all camp activities except as noted.</p> <p>12. I give permission for the YMCA Staff to help apply sunscreen to my child according to the instructions on the bottle.</p> <p>13. I am responsible for any damage incurred to YMCA property.</p>					
Camper Name (Please print)			Parent Signature			Date:				



MEMBERSHIP APPLICATION

*FINANCIAL ASSISTANCE IS AVAILABLE.

APPLICANT INFORMATION

Full Name: _____

Gender: _____ DOB: _____

Parent Full Name (youth members only): _____

Spouse Full Name: _____

Gender: _____ DOB: _____

Emergency Contact and Work Phone: _____

Address: _____

City, State, Zip: _____

Cell: _____ Provider (for app text messages): _____

Email: _____ Member Referral Name: _____

FAMILY MEMBERSHIP INFORMATION

FIRST DEPENDENT/CHILD

Full Name: _____

Gender: _____ DOB: _____

SECOND DEPENDENT/CHILD

Full Name: _____

Gender: _____ DOB: _____

THIRD DEPENDENT/CHILD

Full Name: _____

Gender: _____ DOB: _____

FOURTH DEPENDENT/CHILD

Full Name: _____

Gender: _____ DOB: _____

MEMBERSHIP APPLICATION (Continued)

DEMOGRAPHIC INFORMATION

To help serve you better, please fill out the following information. This information is kept confidential and is strictly voluntary.

My main interests are:

- After-School Programs
- Art
- Early Childhood
- Gymnastics
- Personal Training
- Special Needs
- Volunteerism
- Aquatics
- Camp
- Family Programming
- Performing Arts
- Senior/Adult Programming
- Sports
- Weight Loss

How did you hear about the Y? _____

ETHNICITY

- Asian/Pacific Islander
- Caucasian
- Indian
- Latino/Hispanic
- African-American
- Middle Eastern
- Native American
- Other: _____

OCCUPATIONS

Your Occupation: _____

Employer: _____

Spouse Occupation: _____

Employer: _____

HELP SUPPORT THE Y

PLEASE INITIAL YOUR CHOICE AND SIGN

- Yes, I would like to make a tax-deductible contribution.
- No, I would not like to contribute at this time.
- \$2
- \$5
- \$10
- \$50
- Other: \$ _____

This amount will automatically be deducted with my monthly membership dues and can be cancelled with my authorization at any time. If I want to cancel this donation, I will contact the Y in writing to cancel this donation.

SIGNATURE: _____

DATE: _____

HELP COMMUNITY MEMBERS

PLEASE INITIAL YOUR CHOICE AND SIGN

Through our Community Strong Campaign, your tax-deductible contribution helps us provide program support to families in need.

- Yes, I would like to make a tax-deductible contribution.
- No, I would not like to contribute at this time.
- \$2
- \$5
- \$10
- \$50
- Other: \$ _____

This amount will automatically be deducted with my monthly membership dues and can be cancelled with my authorization at any time. If I want to cancel this donation, I will contact the Y in writing to cancel this donation.

SIGNATURE: _____

DATE: _____

FOR OFFICE USE ONLY: SIGNATURE: _____ CCC ID#: _____

GENERAL CAMP INFORMATION

REGISTRATION

- To guarantee your camper's spot, register early.
- Registrations are first-come, first-served upon availability of space; Camps have limited availability.
- Online registration is preferred. Additionally, registration forms may be submitted in person, by mail, or by emailing to: registrar@nsymca.org.
- Please allow 3-5 business days for hard copy registrations forms to be processed.
- All hard copy registrations must be completely filled out in order to be processed. Missing information will delay your registration and spots are not held. Any registration questions will be communicated via email and will delay registration.
- Know that online registrations are ongoing. If you chose to register on paper, you may lose your spot to an online registration before we are able to process your registration.
- The NSYMCA has the right to deny entrance to a camper if fees are not paid and up to date.
- Camp registrations for any given week are due by 12 pm on the Thursday prior to that week. Any registrations after this time will not be accepted. For details or more information, email: registrar@nsymca.org.

PAYMENT PLANS

- We are offering both Credit Card and ACH payment options for camp registration. Please note:
 - A 3% processing fee will apply to all credit card payments.
 - A 0.96% processing fee will apply to ACH payments.
- Payment plans are available to both members and non-members.
- A \$30 NSF fee will be charged for any payment that is returned by the bank. As a courtesy, one fee will be waived per calendar year.
- There are two payment plan options available for families. Please refer to page 3 for full payment plan details.

CHANGES & TRANSFERS

- All camp cancellations and changes/transfers requests must be submitted in writing to registrar@nsymca.org. A \$30 per camp week (per child) transfer fee will be required for any transfers, and this applies to all requests.

REFUNDS

- Camp cancellations are subject to a \$30 per camp week (per child) cancellation fee. This differs from previous years, where a flat \$30 cancellation fee was applied. For example, if you cancel three weeks of camp, your cancellation fee will total \$90. The refund deadline is May 1, 2025. After this date, no refunds or credits will be issued for cancellations.
- If you have to cancel camp, your deposit for that week will be applied to the cancellation fee. If you paid a \$20 deposit, then you will be charged an additional \$10.
- Refunds may be considered in unique circumstances and granted by the Director at their discretion. Please email registrar@nsymca.org for more information.

WAIT LIST

- Registrations received after a camp is full and has reached capacity will be put on the waitlist.
- Once on the wait list, if a spot becomes available you will receive an email giving 24 hours to claim your spot. If we do not receive any contact, we will move onto the next camper.
- If you are moved off a camp waitlist after March 1st, and registered for camp, you will be charged the standard rate.

DISCOUNTS

- A \$10 multi-child credit will be given, per week, when 2 or more children are registered. This is forfeited if the registration is withdrawn. In order to receive your multi-child credit, you must email registrar@nsymca.org to notify us and request your credit. This credit will be then be placed on your NSYMCA account.
- Military discounts are available. For more information please contact Heidi Busch: hbusch@nsymca.org.



PRESORTED STANDARD
US POSTAGE
PAID
PERMIT NO.78
NORTHBROOK, IL



Summer
Camp
North Suburban YMCA